

TM  
77HI

WINDOW AND DOOR SYSTEM  
WITH THERMAL INSULATION



YAWAL

high thermal insulation properties

## TM 77HI - SYSTEM FEATURES

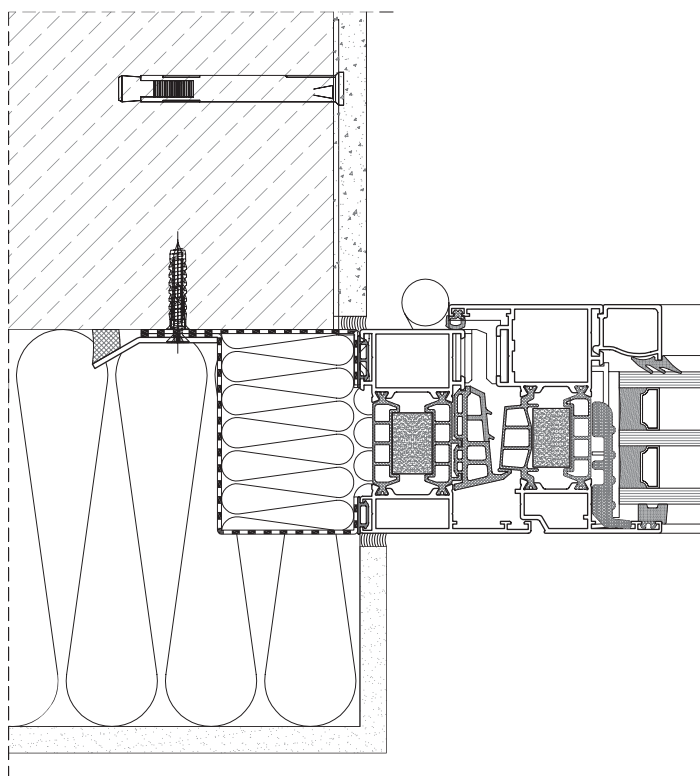
- possibility of heating costs reduction,
- possibility of creating large-surface structures with modern arrangement of façades and interiors,
- easy to match with fittings elements and control elements,
- possibility of creating modern structures of various shapes and configurations,
- excellent value of the heat transfer coefficient at the  $U_f$  level from  $0,8 \text{ W/m}^2\text{K}$ ,
- possibility of making balcony door with low threshold,
- divided thermal separators prevent sashes/leaves from bending under the influence of high temperature,
- possibility of making an all-glass corner.



See the product  
on the website

Picture: 32 Dobra Apartments, Warsaw,  
Design: APA Wojciechowski Sp. z o.o., Warsaw,  
Aluminium manufacturer: Wiga System s.c., Olsztyn

CROSS SECTION THROUGH  
TM 77HI WINDOW



TM 77HI - WINDOW AND DOOR SYSTEM  
WITH THERMAL INSULATION

TECHNICAL PARAMETERS - TM 77HI

		WINDOWS	DOORS
ENERGY	Thermal insulation EN 10077-2	Uw from 0,66 W/m <sup>2</sup> K	Uw from 0,8 W/m <sup>2</sup> K
COMFORT	Acoustic insulation EN ISO 140-3	Rw = 39 ÷ 48 dB	Rw = 36 ÷ 45 dB
	Air permeability EN 12207	Class 4	Class 4
	Water tightness EN 12208	E1650	E900
SAFETY	Wind load resistance EN 12210	Class C5/B5	Class C5/B5
	Anti-theft protection EN 1627	RC2, RC3, RC4	RC2, RC3

TECHNICAL PROPERTIES - TM 77HI

	WINDOWS	DOORS
Frame structural depth	77 mm	77 mm
Sash/leaf structural depth	86,4 mm	77 mm
Infill thickness	19 ÷ 67 mm	35 ÷ 67 mm
Maximum sash/leaf dimensions L x H	1600 x 3000 mm	1400 x 3000 mm/ 2400 x 2900 mm
Maximum sash/leaf weight	180 kg	250 kg
Structure type	fixed, turn, tilt, turn and tilt window	single-leaf, double- leaf doors, doors with transom window and sidelights