

DP
180

OVERHEAD SLIDING DOOR SYSTEM

Primeview



excellent thermal insulation properties

DP 180 PRIMEVIEW – SYSTEM FEATURES

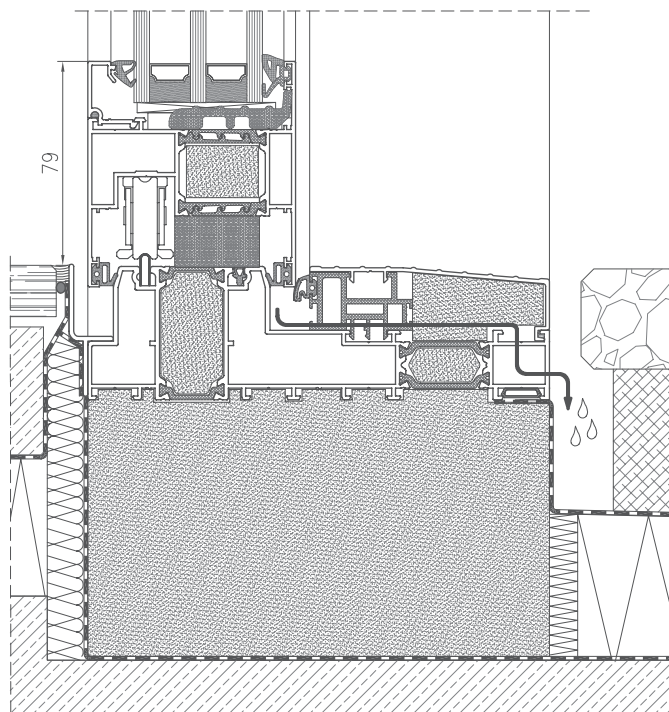
- possibility of making the structure with a narrow mullion in RC2 class,
- possibility of manufacturing doors of very large dimensions,
- possibility of manufacturing all-glass corner at an angle of 90° and a movable mullion,
- possibility of manufacturing doors with integrated threshold – no architectural barriers,
- divided thermal separators increasing resistance to thermal deformation of the leaf,
- possibility of installing automatic doors opening/closing system,
- micro ventilation in the standard variant,
- possibility of infill assembly from the outside,
- possibility of joining of glass panes without sash bars,
- linear drainage solution,
- possibility of using pleated mosquito nets in the monorail frame.



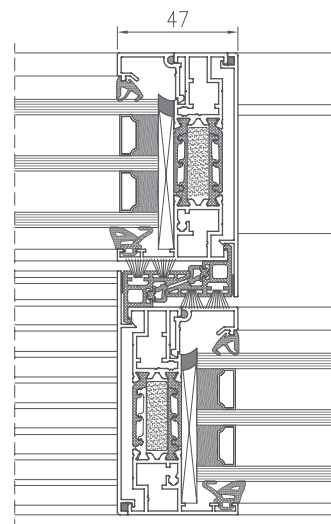
See the product
on the website

Picture: Private house
Aluminium manufacturer: Zimny Sp. z o.o., Łódź

CROSS SECTION THROUGH
DP 180 PRIMEVIEW DOOR, SLIM VERSION



CROSS SECTION THROUGH
DP 180 PRIMEVIEW MULLION



TECHNICAL PARAMETERS - DP 180 PRIMEVIEW

ENERGY	Thermal insulation EN 10077-2	Uw from 0,7 W/m ² K
COMFORT	Acoustic insulation EN ISO 140-3	Rw = 47 dB
	Air permeability EN 12207	Class 4
	Water tightness EN 12208	E1350
SAFETY	Wind load resistance EN 12210	Class C3
	Anti-theft protection EN 1627	RC2

TECHNICAL PARAMETERS - DP 180 PRIMEVIEW

Frame structural depth	180 mm with the extension possibility
Leaf structural depth	81 mm
Infill thickness	29 ÷ 63 mm
Maximum dimensions L x H	leaf 3300 x 3300 mm
Maximum weight of manual leaf	440 kg
Maximum weight of automatic leaf	600 kg
Maximum weight of fixed part	1200 kg
Structure type / leaves diagrams	Diagrams: A, C, D, F, G, K, Galendage, 90° corners